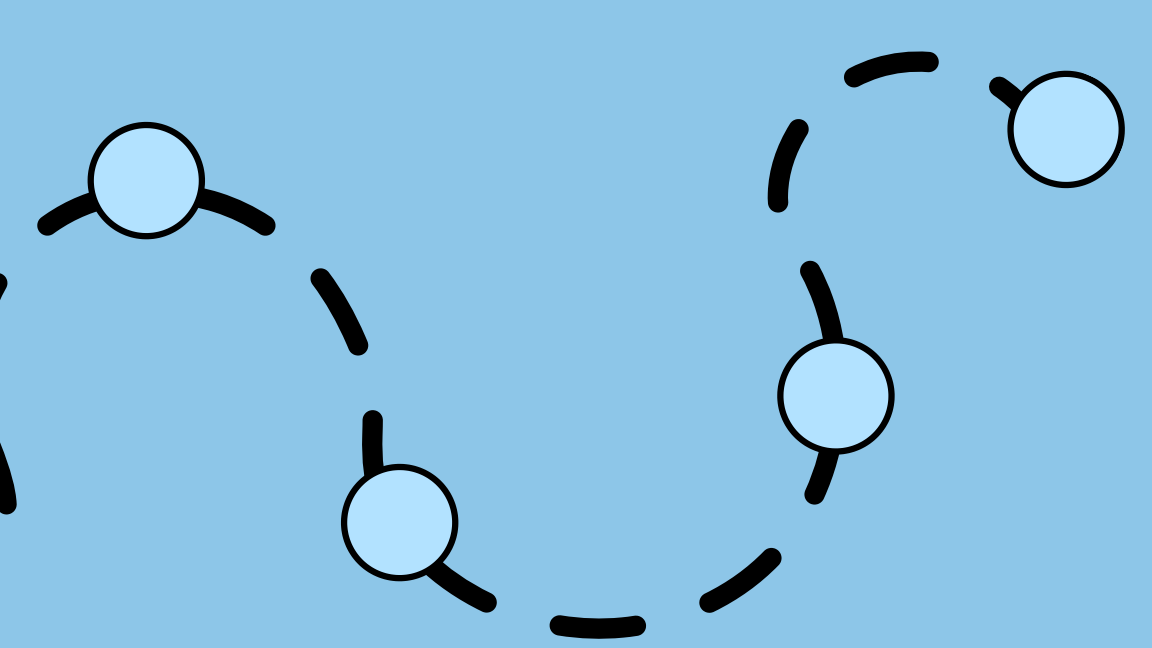
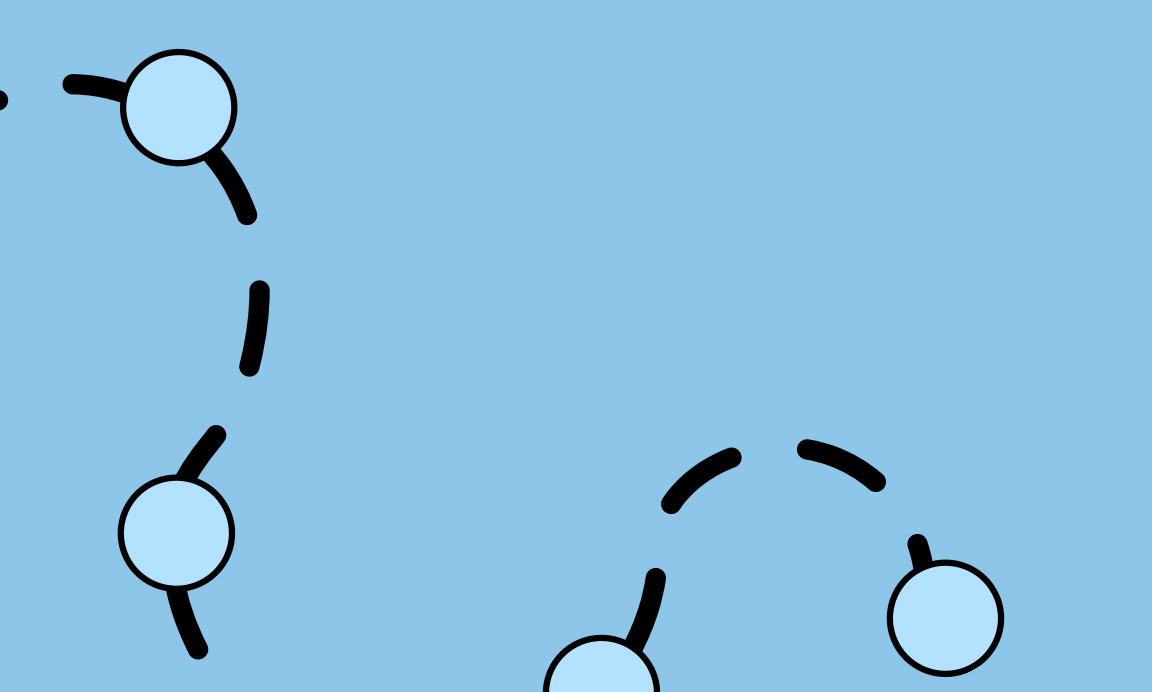


Out-of-Clinic Care on Orcas Island

*Recommendations for action by the
Orcas Community Based Care
Stakeholder Workgroup*



Goals for today's conversation



- Share the process and results of the Orcas Community Based Care Stakeholder Workgroup
- Discuss next steps for OIHCD's investment in community-based health on Orcas in 2025-2026

Background on the Process

In summer of 2025, stakeholders on Orcas Island gathered **to build consensus** and shared understanding **about the greatest unmet needs on Orcas Island pertaining to healthcare**

The goal of this stakeholder group:

To prioritize project areas for funding and development in order to improve coordination across systems of care on and off Orcas Island island

Participants in the workgroup



- **San Juan County Senior Services:** Heidi Bruce, Aging & Family Case Coordinator
- **Hospice of the Northwest:** Debra O’Conner, Hospice Nurse
- **Orcas Community Resource Center:** Holly Southern, Program Manager & Erin O’Dell, Executive Director, Allison O’Brien, Community Health Worker
- **Orcas Island Health Care District:** Trey Holland, Commissioner, Mark Salierno, Board Chair, Chris Chord, Superintendent
- **Orcas Fire & Rescue:** Karen Guice, Commissioner, Brian Ehrmantraut, Board Chair, Chad Kimple, Fire Chief
- **Island Primary Care - Orcas:** Aimee Johnson, Clinic Manager, Indy Zoeller, Patient Liaison, Marcy Shimada, Director of Practice Administration

Products of the Workgroup

- Consensus list of areas of highest need in out-of-clinic care on Orcas
- Orcas Integrated Care report
- Research Grid to guide future work
- Recommendations for action

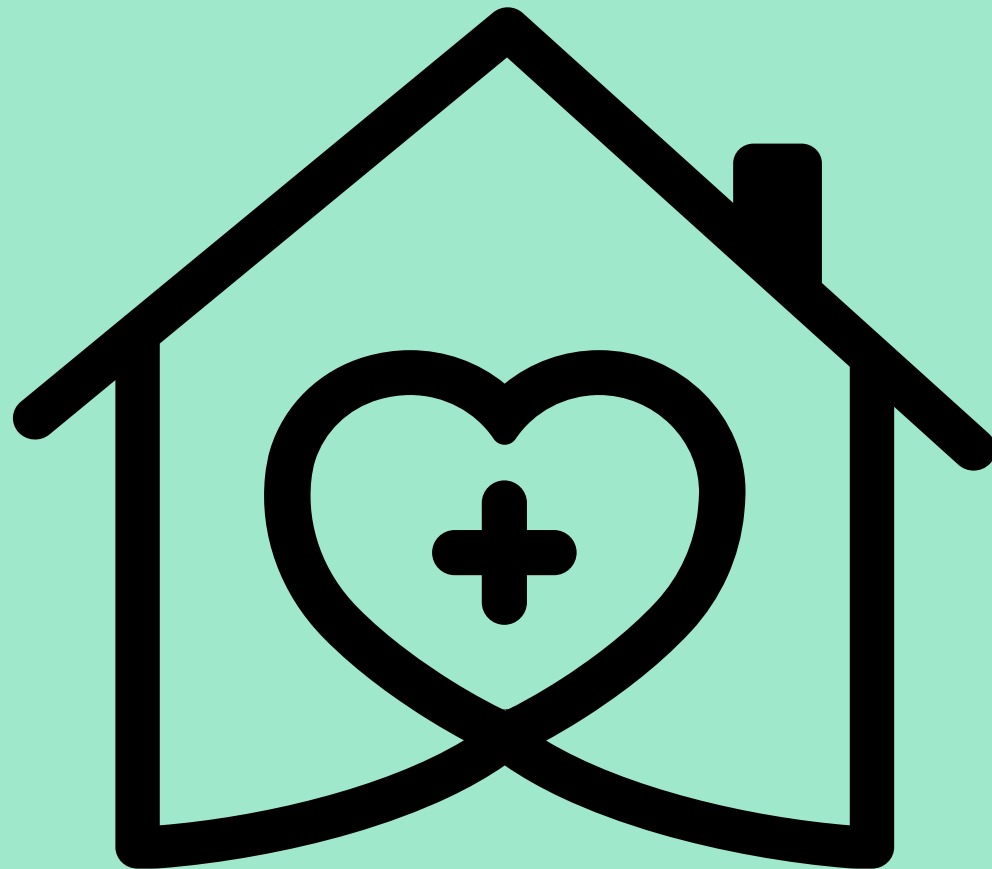
July 2025 Brainstormed Areas of Need

- Home-based Care
- Discharge follow-up
- Transportation
- Dementia Care
- Assisted Living
- Care Management/
Care Coordination
- In-community
Services

Home-based Care

Medical in-home care

- In home care visits for those unable to get to clinic
- Improved access to homecare aides
- Wound care
- Referral system for caregivers and those seeking care (fits under caregiving & in-home care)



Caregiving (social needs)

- In-home supports for basic needs; ex: garbage, safety, maintenance
- Activities of daily living (ADLs) assistance at-home
- Affordable/subsidized caregiving; for middle income too (fits under caregiving & in-home care)

Care Management/ Care Coordination



- Clear and consistent referral system from clinic and providers
- Care coordination for complex needs
- Advocacy & education services for those with chronic conditions
- Orcas Island case manager position. This would be a person in charge of receiving requests from providers, family members, EMS, etc. and coordinating the needed services for the patient/person in need.

Discharge follow-up



- Post hospitalization stay transitional care; fly off follow-ups: fall prevention, medication reconciliation, assessing and coordinating caregiver needs
- Coordination re f/u for those who have off-island PCPs, or those who have no established care with anyone

Transportation



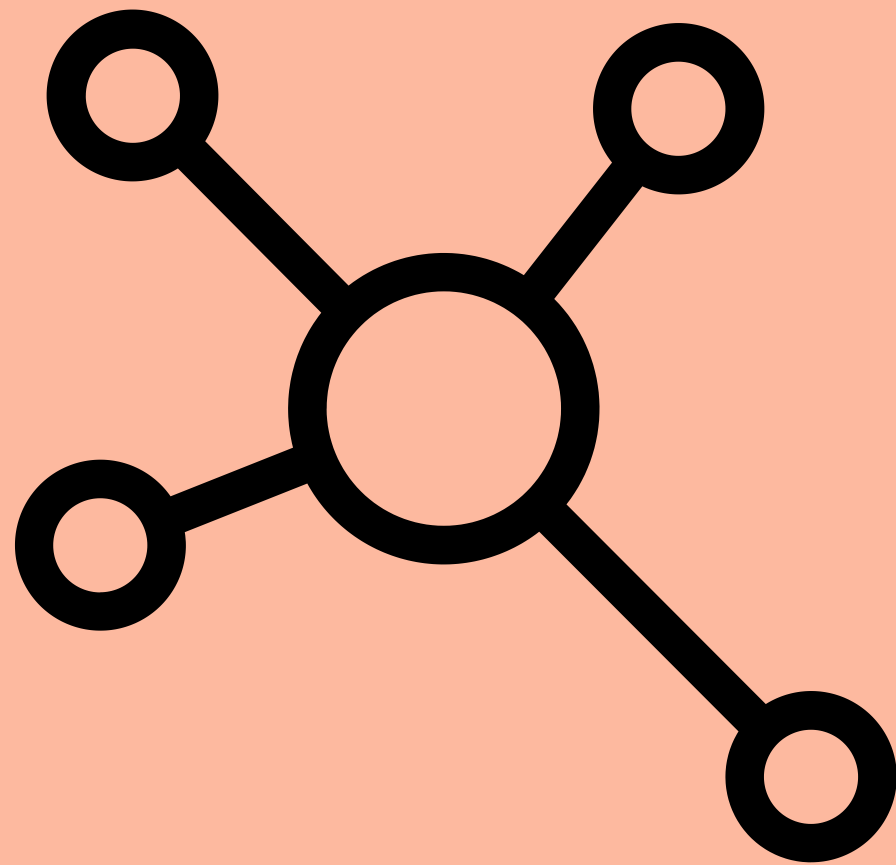
- Support for getting home from hospital stays via med flight; creating a communication loop for those with no social connections at time of fly-off
- Off-island medical transport and lodging
- On Island transportation services

Dementia Care



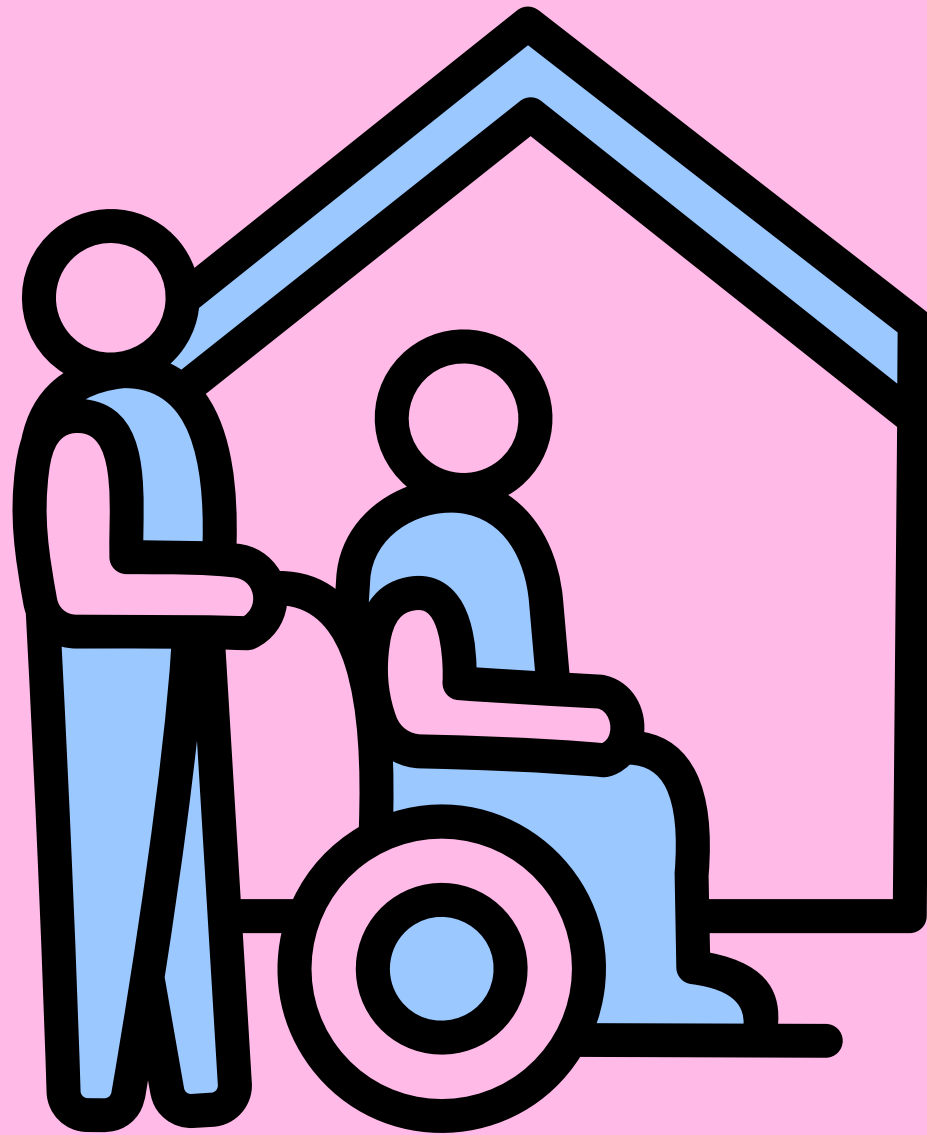
- Safe public spaces for those with dementia
- Enhanced coordination of care amongst crisis services and emergency responders specific to dementia

In-community Services



- Improved access to behavioral health services
- Social services (ex: Hygiene services)
- Alternative medicine services
- Specialty services (Ex: Chemotherapy & dialysis)
- Food as medicine for chronic diseases
- Preventative services-- education & screenings
- Immigrant services
 - Financing options or assistance for undocumented immigrants specific to fly-offs & emergency care
 - Care for uninsured/immigrants
 - Translation - professional and culturally appropriate

Assisted Living



- Facility
- Memory care facility

Questions & Discussion

Recommendations for Action

1. Coordinated Caregiving System
2. Mobile Integrated Health (MIH) Development
3. Emergency & Off-Island Care Coordination
4. Travel & Transportation Access
5. Health Education & Screening Services
6. Sustaining Long-term Care on Orcas

1. Coordinated Caregiving System

Project Participants/Advisors: Orcas Island Health Care District (lead), San Juan County Senior Services, Debra O’Conner, with collaboration with Orcas Island Fire District

- a. **Registered Nurse Care Manager Role**
- b. **Caregiver-Client Referral Network**
- c. **Streamlined Certification & Training**
- d. **Caregiver Network Development**
- e. **Affordability of Care**

2. Mobile Integrated Health (MIH) Development

Project Participants/Advisors: Orcas Island Fire District (lead), Orcas Island Health Care District, with collaboration with Debra O’Conner, San Juan County Senior Services, and Orcas Community Resource Center

a. MIH Program Structure

b. Reimbursement models & budget planning

c. Referral Management System

3. Emergency & Off-Island Care Coordination

Project Participants/Advisors: Orcas Island Health Care District (lead), Orcas Island Fire District, San Juan County Senior Services, and Orcas Community Resource Center

- a. Emergency Room Communication & Discharge Planning**
- b. Explore options for continual education and outreach to regional ERs regarding particularities of discharge planning for San Juan County residents**

4. Travel & Transportation Access

Project Participants/Advisors: Orcas Island Health Care District (lead), Orcas Island Fire District, San Juan County Senior Services, and Orcas Community Resource Center

**a. Medicaid Reimbursement for
Transport**

b. Transportation Expansion

5. Health Education & Screening Services

Project Participants/Advisors: Orcas Island Health Care District (lead), San Juan County Senior Services, Orcas Island Senior Center, Island Primary Care Orcas, Orcas Community Resource Center

- a. **Assess priority Health Areas for education & screening services**
 - i. Identify the most critical health topics for Orcas Island residents.
 - ii. Ensure health education and screening services are inclusive and accessible for all Orcas Island residents.
 - iii. Develop partnerships between service providers, San Juan County and local/regional entities to carry out services.

6. Sustaining Long-Term Care on Orcas

Project Participants/Advisors: Orcas Island Health Care District (lead)

a. Orcas Loving Care Support

- i. Conduct outreach to assess Orcas Loving Care's current and projected needs.
- ii. Explore partnerships with the home-based care project.

b. Billing & Subsidy Infrastructure

- i. Provide technical assistance for billing if needed.
- ii. Build capacity to support patient access via subsidy or co-pay programs.

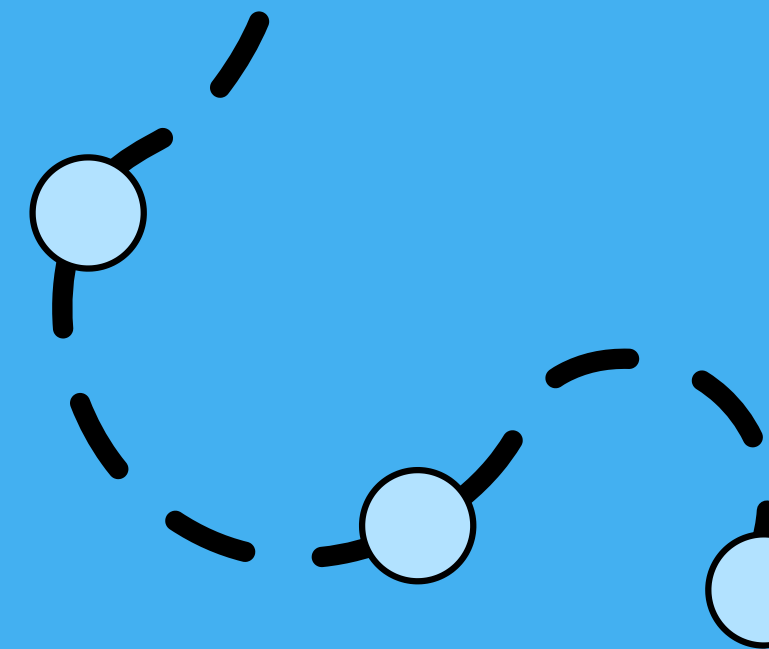
Questions & Discussion

Next Steps

- OIHCD Board approves of moving forward with these 6 areas of action.
- If approved, further exploration into each of these (overlapping) areas will be made, in partnership with the stakeholders involved in this process.
 - All of these projects are in early stages; year-1 work will be start-up



Estimates of Potential First Year Investment



| Area of Action | Estimated 1-year investment |
|--------------------------------------------|-----------------------------|
| Coordinated Caregiving System | \$150,000.00 |
| Mobile Integrated Health (MIH) Development | \$25,000.00 |
| Emergency & Off-Island Care Coordination | --- |
| Travel & Transportation Access | --- |
| Health Education & Screening Services | \$10,000.00 |
| Sustaining Long-Term Care on Orcas | \$10,000.00 |
| Total | \$195,000.00 |

Thank you!